

LightTower



An unparalleled illuminated storage experience

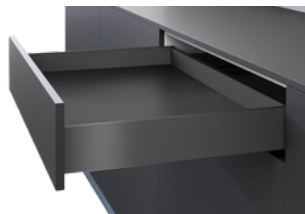
This unique pantry system utilises the AvanTech YOU platform drawer system, known for its user-friendly design and outstanding performance. It also incorporates the AvanTech YOU Illumination lighting, which uses LED lighting to brighten up the sides and contents of each individually opened drawer.

The LED lighting system provides a warm and inviting atmosphere, while the sleek and modern design of the AvanTech YOU drawer system adds a touch of sophistication.

FEATURES

Colour temperature	4000k
Load classes of drawers	40kg 70kg
User friendly features	sensor, clear glass sides
Ideal cabinet widths	Kitchen, living room, bathroom, office
Used with	AvanTech YOU drawer system and Sensys hinges

AvanTech YOU drawer system



Material steel
Colour anthracite | silver | white
Nominal length 270 - 650mm
Height 77mm - 251mm
Material powder-coated steel
Drawer type double walled
Design customisation designcapes, design profiles, illumination led lighting,

Sensys hinge system



Material steel nickel plated
Colour silver | obsidian black
Opening angle 95° - 110° | 165°
Temperature conditions 5°C- 40°C
Door adjustment 3-dimension
Optional silent system, push-to-open
For doors wood, glass | wood, aluminium